



*Illustrative elevation - South-East corner looking out on to Park Lane and Colenso Road*



*Illustrative elevation – South facing looking out on to Colenso Road*

# Design Concepts

# Appendix A



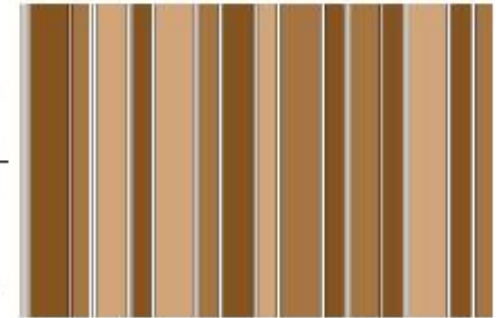
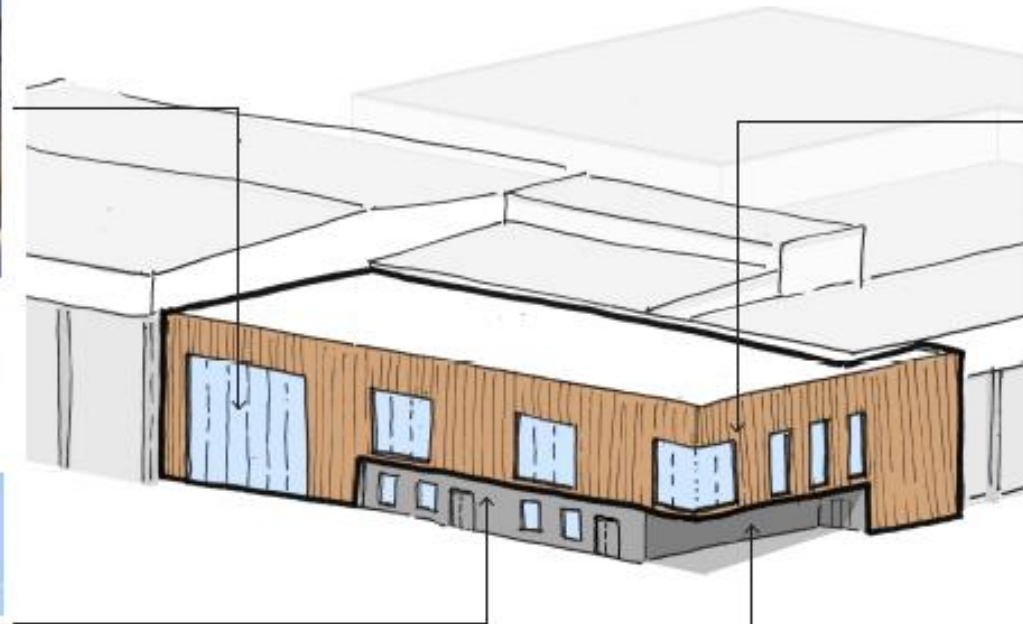
### Curtain Wall Glazing System

The glazing system will consist of simple framing and a maximise the amount of glazing to let natural light in and allow for views out.



### External Brick - Grey

To contrast the buff brick of the existing leisure centre, a grey brick will be used for the lower half of the extension. A contemporary, light grey brick will provide a good transition between old and new.



### External Cladding System

Mixture of three natural, timber colours that create the effect of a timber clad elevation.

The use of a natural feeling materials will help the new build section settle in its context of the parkland.

### Extension Cantilever

The intention is to have the upper level of the extension cantilever beyond the existing line of the leisure centre. This will create a feature corner for the scheme. This is subject to the Structural Engineers input in the following work stages.



An example of the cladding being used on Hart Leisure Centre